

# Ansys Digital Safety Manager

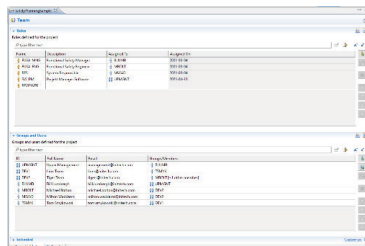
## Main Features

- ✓ Model-based environment to support multi-project safety management
- ✓ Organization-wide central hub for gathering safety analysis results
- ✓ Definition, execution and monitoring of safety plans
- ✓ Efficient provision of safety cases
- ✓ Seamless integration into the engineering tools landscape



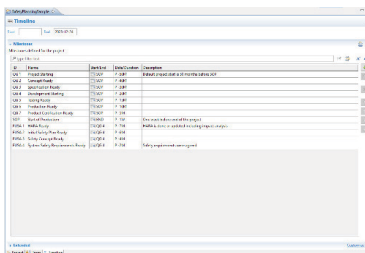
## Safety Team and Roles

- ✓ Define and manage participants in safety projects
- ✓ Establish groups and structure participants in them
- ✓ Define roles that are relevant in safety projects
- ✓ Assign roles to participants



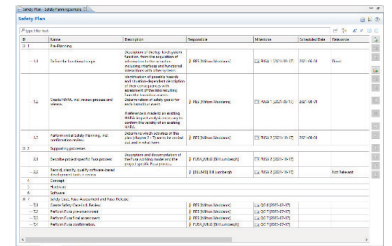
## Safety Plan - Activities, Timing, and Performers

- ✓ Define and manage safety plans
- ✓ Structure safety plans with activities and activity groups
- ✓ Define milestones and schedule activities
- ✓ Assign performers to activities depending on their roles



## Safety Plan - Execution and Monitoring

- ✓ Define and manage work products
- ✓ Assign work products as expected results of safety activities
- ✓ Link work products with safety analysis results in Ansys medini analyze or in external tools
- ✓ Monitor the progress of safety plans

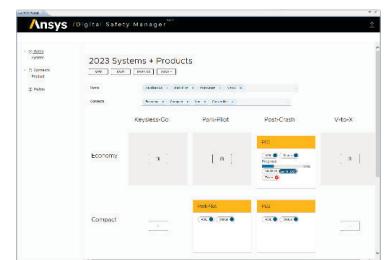


## Multi-Project Dashboard

- ✓ Use a web-based dashboard to gather information on multiple safety projects

## Integration

- ✓ Integrate with issue tracking systems (e.g., Bugzilla, Trac, RTC, Redmine, Jira, Mantis, PTC Integrity, Microsoft® Outlook)
- ✓ Integrate with ALM/PLM and requirement management tools like PTC Integrity, Inland Codebeamer, Jama, Siemens Polarion, IBM Rational DOORS and DOORS NG



FOR INFORMATION:

Enginsoft | Alessandro Mellone  
 a.mellone@enginsoft.com  
 Tel. 0461 979 340  
 www.enginsoft.com